



GAT MONTHLY MEMBERSHIP PROGRESS REPORT

Results as of: 2/28/2023

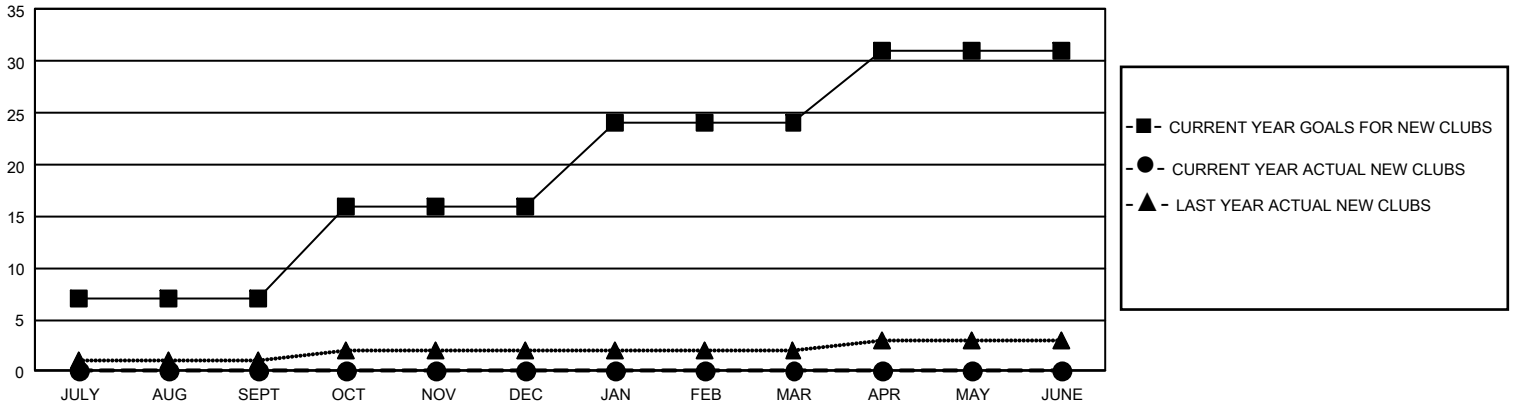
GMT Constitutional Area 1, Group J

REPORT DOES NOT INCLUDE CLUBS IN UNDISTRICTED AREAS.

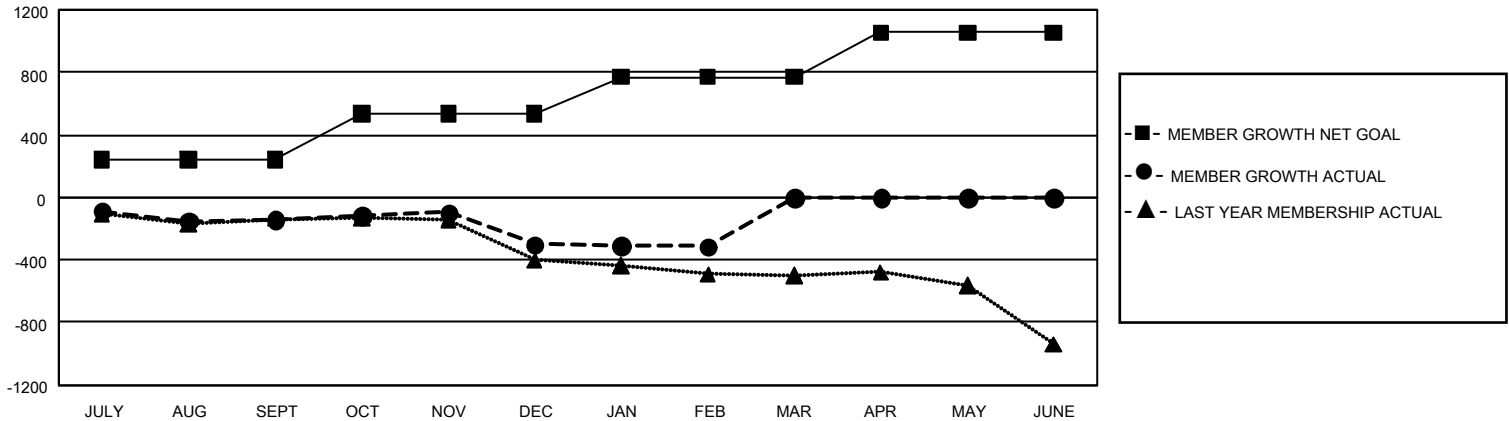
Clubs			
RESULTS FOR 2022-2023			
QUARTER	NEW CLUB GOAL	NEW CLUBS	DROPPED CLUBS
JULY/AUG/SEPT	21	0	5
OCT/NOV/DEC	27	0	4
JAN/FEB/MAR	24	0	6
APR/MAY/JUNE	21	0	0

Members			
RESULTS FOR 2022-2023			
QUARTER	MEMBER GROWTH NET GOAL	MEMBER GROWTH ACTUAL	DROPPED MEMBERS ACTUAL (including transfers)
JULY/AUG/SEPT	241	420	522
OCT/NOV/DEC	297	479	597
JAN/FEB/MAR	231	363	337
APR/MAY/JUNE	287	0	0

GOALS AND ACTUAL NEW CLUBS CUMULATIVE



GOALS AND ACTUAL MEMBERS CUMULATIVE



DROPPED CLUBS: 15	396 CLUBS OF 896 ADDED 1 OR MORE NEW MEMBERS	<u>GENDER DISTRIBUTION</u>	
		MALE	14,148 (69.49%)
<u>DROPPED MEMBERS</u>		FEMALE	6,211 (30.50%)
DECEASED	232	NON BINARY	1 (0.00%)
CLUB CANCELLED	44	PREFER NOT TO ANSWER	1 (0.00%)
OTHER	1,180	TOTAL FAMILY UNIT MEMBERS	4,030
TOTAL	1,456	FAMILY MEMBERS PAYING HALF DUES	2,056

[CLICK HERE FOR CUMULATIVE MEMBERSHIP DATA](#)